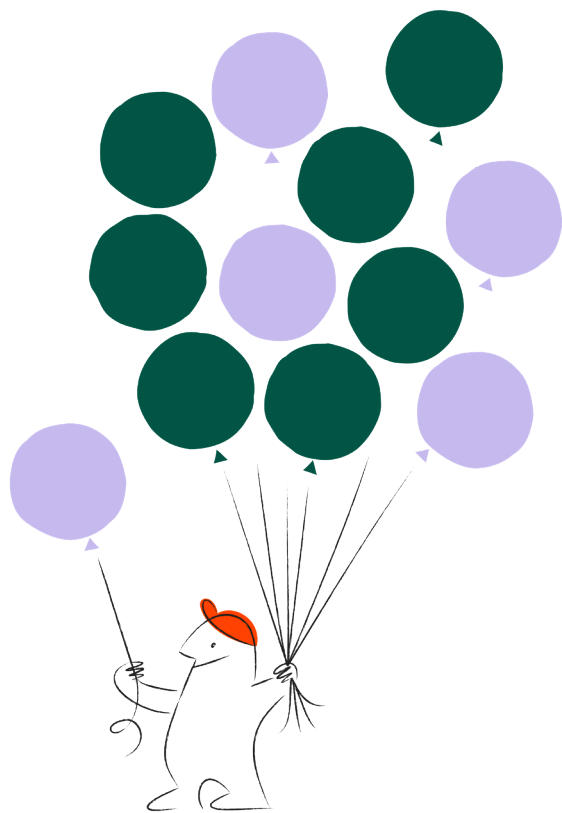


Pioneer of a richer working life.



What is Työkanava?

Työkanava Oy is a new kind of staffing service company. We are building a Finland where work increases well-being – and we celebrate every job we create. Our most important task is to help job seekers with partial work ability to find employment in jobs that match their skills and abilities. Työkanava hires people with partial work ability directly and supplies their work contribution to companies.

What does Työkanava offer job seekers?

Työkanava offers a new kind of employment opportunity. We will map the tasks available in our network for you, taking your skills and abilities into account. We will hire you for an employment relationship when a suitable job has been found for you at one of our client companies. You enter into an employment contract with Työkanava, but the work is carried out at the client company. Work tasks are shaped to meet your needs, and an expert from Työkanava provides you support with your everyday work.

To get employment through Työkanava, you must have partial working ability and be registered as an unemployed job seeker in the TE Services*. A TE Services official will assess your suitability to become a Työkanava employee. For more information on the eligibility conditions, please contact TE Services.

How do I get employed by Työkanava?



TE Services assesses your suitability to become a Työkanava employee. For more information on the eligibility conditions, please contact TE Services.



Assessment of suitability



TE Services assesses your suitability to become a Työkanava employee. For more information on the eligibility conditions, please contact TE Services.



Finding a job



When we find a suitable job for you, we will help you get acquainted with the tasks and conclude an employment contract.



The work begins



We will walk alongside you in your everyday work and provide you with the support you need to succeed in your work.